



Gisburn Road Community Primary School Spring Term I – January to February 2023



WELCOME BACK TO SCREECH OWLS

We hope that you and your families are all well and that you have had a lovely Christmas and New Year. During this half term, we will be very busy in school and have planned some exciting learning tasks.

Remember to keep up to date with our school Facebook page, Twitter and the class page on the website. You can send children's home learning via the cohort e-mail address of screechowls@gisburnroad.com. I will respond to any emails on **Thursdays**. If you would like to pass on any urgent information, I will be on the yard each evening but you can also contact the office on 812287; Mrs Barwell will pass on any important information.

Mrs Bradley and Miss Pearson

PSHE – As of September 2020, this is now a statutory subject for all Primary and Secondary Schools. Here at GRCPS we have always taught PSHE on our timetable. We are now following the PSHE Association's scheme of work for PSHE. Our Governing Body have made the decision that Sex Education will be taught in Year 6. **This is a non- statutory part of the curriculum and parents can choose to 'opt out' of this section of the curriculum.** On our newsletters we will inform you what is coming up each half term so you are aware and Mrs Bradley will send a consent letter to parents at the appropriate time.

Here is what your child will be learning about this half term-Living in the wider world

- the benefits of living in a diverse community
- how stereotypes can negatively influence behaviour and attitudes towards others
- ways to respond to prejudice
- what is discrimination and how to challenge it

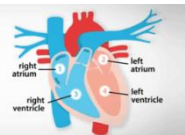
English – In English this half term, we will be looking at an older text: Macbeth by William Shakespeare. We will read several different versions of the story and will investigate the vocabulary used. We will study the characters in detail and look for clues about how they are feeling at key points of the plot. Our final written outcome will be a re-telling of the story. We will then study a range of poems with imagery. During this theme, we will again focus on the vocabulary used by different authors and discuss reasons for the author's choice of language and techniques.



Mathematics – **During** this half term, we will be focusing on several different areas of maths. We will be practising our times tables every day and this is something that you can really make a difference with, by practising at home. ☺ Our maths lessons will begin by focusing on fractions, decimals and percentages. We will then work on developing our knowledge of area, perimeter and volume. Finally, we will extend our knowledge of interpreting data from a range of graphs and charts.

Science –

This half term we will be learning about the human body, with a focus on keeping healthy. We will learn about the human circulatory system, including investigating our heart rates. We will then learn about the impact of diet, exercise, drugs and lifestyle on our bodies.

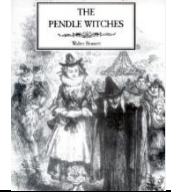


Computing – Our Computing topic for this half term is Big Data. In this topic, we will identify how bar codes and QR codes work. We will investigate how infrared waves transmit data and the use of radio-frequency identification (RFID)

Religious Education – In R.E, the children will be looking at the religion of Islam. We will be looking deeper into the 5 Pillars of Islam, especially the fifth Pillar. We will investigate what is Hajj and why it is important to Muslims. We will discuss the effect on Muslims physically and spiritually and how it might change someone after the journey to Mecca is over.

DT- Our DT work for this half term links to our science topic. We will be investigating the work of different chefs who write recipes that are quick and easy to prepare, good value and healthy. We will practise our chopping, grating, slicing and shredding skills before making a meal suitable for a family.

History- For our first history topic of Year 6, we are excited to be looking at the theme of 'crime and punishment'. In this topic, we will look at how crimes have changed (or not) throughout different periods of history and investigate different punishment methods used. We will conclude our work with a study of the Pendle Witches. As part of this theme, we will be visiting the National Justice Museum in Manchester in February.



Physical Education – During this half term, the children will have two PE lessons each week (Mondays and Thursdays). One of our lessons is invasion games where children will develop skills in rugby, including developing an understanding of tactics when playing a small game. Our second lesson is gymnastics. During these lessons, we will practise paired and group balances before incorporating these into a sequence.

THINGS TO REMEMBER

Diary Dates:

Tuesday 3rd January: Spring term

Friday 10th February: Half term holiday

- **PE days :** Screech Owls have P.E on **Mondays** and **Thursdays**. Please ensure your child has both their indoor and outdoor PE kit in school for those days.
- **Home Learning:** Home learning is set on Fridays and should be handed in by the following Thursday. Each week, your child will have spellings to practise, times tables practice and reading homework.
- **Reading:** We love reading! It is still vital that your child reads every day in Year 6. We have established our reading challenge with children earning rewards based on how many times an adult at home has listened to them read and signed their reading diary. By reading regularly, your child will develop fluency and comprehension skills and will also help them to improve their writing skills. It would be great to encourage your child to read a selection of non fiction texts e.g. instructions, explanations, newspapers and magazine articles as well as fiction.

