



Gisburn Road Community Primary School

Autumn Term 1

Sept - Oct 2023

AUTUMN 1 WITH THE LAUGHING OWLS



Welcome back to school after what we hope has been a lovely summer holiday! We are ready for an exciting year in school. Year 1 to Year 2 is a big jump with the change of building and the decrease in continuous provision, but we are here to make sure your children are happy, settled and learning! We are very excited for the year ahead and hope you are too!

We have lots of plans, including trips, visits in the local area and welcoming parents and carers in to school regularly. Please do feel free to email me at laughingowls@gisburnroad.com or ring school to discuss your child's progress or just to say hello; it is always nice to catch up with parents and carers. To keep up to date with what is going on in school and any parent sessions we would like you to attend, please visit our school Facebook page or follow the link below which takes you to our 'What's on'

calendar <https://www.gisburnroad.com/CALENDAR>. You will also receive letters with the details on too. If you have any questions or concerns, please feel free to e-mail me via the cohort e-mail address of laughingowls@gisburnroad.com which will be checked every Tuesday. For any urgent / important information, please contact the school office on 812287 or catch us in the yard. The rest of this newsletter will let you know what pupils will be learning about in Year 2 during their first half term.

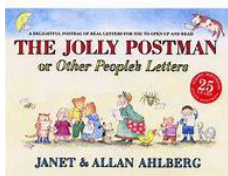
We look forward to getting to know you and your children better over the coming months.
Mrs Brown and Mrs Mitchell

PSHCE

Our Autumn Term units will be focussed on 'Families and Friendships' and 'Safe Relationships' For the next 6 weeks, we will be learning:

- how to be a good friend and the different ways people can meet and make friends
- strategies for positive play with friends
- about what causes arguments between friends and how to resolve them positively
- how to recognise, and ask for help, when they are feeling lonely or unhappy or to help someone else
- how to recognise hurtful behaviour, including online and what to do if they experience this
- about what bullying is, different types of bullying and how this can make you feel
- about the difference between happy surprises and secrets that make them feel uncomfortable or worried, and how to get help
- how to resist pressure to do something that feels uncomfortable or unsafe and how to ask for help

English



In English this half term we shall be focusing on the text 'The Jolly Postman' by Janet Ahlberg. We will sequence and discuss the main events, making predictions and inferences before planning and writing our own version of the story based on the place where we live. We will focus on using nouns and using subordination for time using 'when' and on our handwriting. Following this, we will explore Valley Gardens and after learning about non-chronological reports, write our own based on this area of Barnoldswick. Look out for a letter inviting you to join us when exploring Valley Gardens.

Mathematics

The mathematics units we are studying this half term are:

- Number and Place Value – place value to 100, exchanging, partitioning, comparing two numbers and multiples of 10
- Measurement, Length and Mass – comparing length, height and mass
- Addition and Subtraction – Understanding number bonds to 20, adding and subtracting numbers and solving problems
- Geometry 2D and 3D shapes – Identifying, making and naming 2D and 3D shapes

Science

This half term, we are studying 'Healthy Humans'. We will have a visit from the school nurse to discuss and observe how germs can spread and how we can wash our hands to help stop the spread. We will also investigate how germs can spread through sneezing. We will also explore how we can keep our bodies and minds healthy with our diet and exercise and we have a personal trainer visiting our class to discuss the importance of regular exercise.



Computing



In Computing, we will be exploring stop motion animation using tablet devices. We will begin by learning what animation and stop motion is before planning and creating our own stop motion animation.



Religious Education

Our unit this half term is Christianity, linked to God. Our focus question is: Does how we treat the world matter? Pupils will investigate ways in which Christians care for world and learn about Harvest festival celebrations. We will explore how we care for the world and why this is important.

DT

This half term our focus is linked to our Science unit on healthy eating. Pupils will explore different salad foods, before designing, creating and evaluating their own salad.



Geography

Our topic is 'Continents and Oceans'. Pupils will use a range of maps at different scales to name and locate the world's 7 continents and 5 oceans. We will explore each of them to recognise landmarks and identify basic human and physical features.

Physical Education

PE will take place on a Monday and Thursday afternoon. Please make sure that pupils have a labelled PE kit in school including pumps, shorts and a t-shirt. This half term, we will be focussing on developing children's underarm and overarm throwing techniques in Athletics and learning how to strike a ball for distance.



THINGS TO REMEMBER

PE Days: PE will take place on Mondays and Thursdays.

Home Learning: Home learning will be sent home on a Friday and should be completed for the following Thursday. This will include an English task and a Maths task. Please feel free to send any of your child's creative learning that they would like to study more of at home to laughingowls@gisburnroad.com.

Reading: Your child should read and discuss their reading book at least 3 x a week for at least 5-10 minutes. This will help them to improve their fluency and comprehension skills, which will also help them to improve their writing skills. Please ensure home reading records and books are in school daily as we do also try to read with pupils as often as we can.

