



Gisburn Road Community Primary School

Autumn Term 1

Sept - Oct 2022

AUTUMN 1 WITH THE LAUGHING OWLS



Welcome back to school after what we hope has been a lovely summer holiday! We are ready for an exciting year in school. Reception to Year 1 is a big jump and we are here to make sure your children are happy, settled and learning! We are very excited for the year ahead and hope you are too! We have lots of plans, including trips, visits in the local area and welcoming parents and carers in to school regularly. Please do feel free to email me at laughingowls@gisburnroad.com or ring school to discuss your child's progress or just to say hello; it is always nice to catch up with parents and carers. To keep up to date with what is going on in school and any parent sessions we would like you to attend, please visit our school Facebook page or follow the link below which takes you to our 'What's on' calendar <https://www.gisburnroad.com/CALENDAR>. You will also receive letters with the details on too. If you have any questions or concerns, please feel free to e-mail me via the cohort e-mail address of laughingowls@gisburnroad.com which will be checked every Monday. For any urgent / important information, please contact the school office on 812287 or catch us in the yard. The rest of this newsletter will let you know what pupils will be learning about in Year 1 in their first half term. I will also e-mail out Learning Talk each week to give you the opportunity to discuss the learning that is taking place with your children.

We look forward to getting to know you and your children better over the coming months.
Mrs Brown, Mrs Wheeler and Mrs Berger

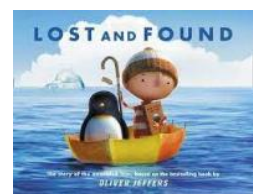
PSHCE

Our Autumn Term units will be focussed on 'Families and Friendships' and 'Safe Relationships' For the next 6 weeks, we will be learning:

- About people who care for us
- The role these people play in our lives and how we care for them
- What it means to be a family and how families are different
- About the importance of telling someone if they are worried about anything
- About situations when someone is hurt and whom to go to for help
- About what it means to keep something private, including parts of the body that are private.

English

In English this half term we shall be focusing on the text 'Lost and Found' by Oliver Jeffers. We will be studying the book, making predictions based on what has been read so far and discussing the main events and characters. We will retell the story orally, using talk4Writing techniques and making inferences on what is being said and done. We will then use what we know to write our own version of the story with our own innovation of the characters and setting. Following this, we will be studying non-fiction information texts and writing our own information text, based on an animal.



Mathematics

The mathematics units we are studying this half term are:

- Number and Place Value – counting to 30, finding one more and one less and comparing quantities
- Measurement, Length and Mass – comparing length and height using our body parts and comparing and measuring mass
- Addition and Subtraction – Understanding number bonds, adding and subtracting numbers and solving problems
- Geometry 2D and 3D shapes – Naming circles, triangles, square rectangles, oblong rectangles, spheres, pyramids, cubes and cuboids

Science



This half term, we are studying 'Animals' with an exciting visit to the aquarium to finish the unit. We will be identifying and naming a variety of common animals including fish, amphibians, reptiles, birds and mammals and investigating whether they are carnivores, herbivores or omnivores. We will be looking at the structure of these animals and finding out how animals look different to one another before grouping them in different ways.

Computing

In Computing, we will be developing our mouse skills when using a computer, as well as learning how to log on. We will use our developing mouse skills to draw shapes, illustrate a story and create a self portrait.

Religious Education



Our unit this half term is Christianity, linked to God. Our focus question is: What lights our way? Pupils will explore the Christian use of the term 'father' to address God, especially in prayer. We will also be visiting Holy Trinity Church to learn about prayer and a Christian's view of God.

Art

This half term our focus is 'Drawing into 3D – Clay'. We will enjoy experimenting with a variety of media; pencils, rubbers, crayons, pastels, felt tips, charcoal, ballpoints, chalk and then move on to creating our own animal with playdough and clay.

Geography

Our topic is 'Hot and cold Areas of the World' and is focussed on identifying the location of hot and cold areas of the world in relation to the Equator and the North and South Poles. We will use a range of maps and globes and recognising differences between their own and others' lives around the world.

Some useful resources are:

<https://www.google.co.uk/earth>

Go Jettters - Cbeebies



Physical Education

PE will take place on a Monday and Tuesday afternoon. Please make sure that pupils have a labelled PE kit in school including pumps, shorts and a t-shirt. This half term, we will be focussing on developing children's fundamental skills, including running, hopping, skipping jumping, throwing etc. and using our new skills in games situations.

Phonics

In Year 1 we learn a new Phase 5 Phonics sound daily. It will take us all year to learn our Phase 5 sounds and the progress pupils make in their reading is incredible as they learn all of the sounds. If pupils need support revisiting previously taught sounds, they will go over them in an intervention group with Mrs Wheeler in addition to the whole class daily lessons. All pupils have a reading book based on the phonemes that they have learnt and can remember. Reading with your child at home has a huge impact on their Phonics learning, which is an integral part of the Year 1 curriculum. I am asking children to read at least 3 times a week, every day if possible. More information will be given later in the year to explain the Year 1 phonics screening check, which is a statutory phonics check for all Year 1 pupils to take in June.

THINGS TO REMEMBER

PE Days: PE will take place on Mondays and Tuesdays.

Home Learning: Home learning will be sent home on a Friday and should be completed for the following Thursday. This will include an English task and a Maths task. Please feel free to send any of your child's creative learning that they would like to study more of at home to laughingowls@gisburnroad.com.

Reading: Your child should read and discuss their reading book at least 3 x a week for at least 5-10 minutes. This will help them to improve their fluency and comprehension skills, which will also help them to improve their writing skills. Please ensure home reading records and books are in school daily as we do also try to read with pupils as often as we can.

Dates for the Diary:

Wednesday 21st September – Year 1 local visit to Holy Trinity Church

Friday 23rd September (9am) – Cancer charity coffee morning

TBC Wednesday 12th October – Year 1 Trip to Blackpool Sea Life Centre – letter to follow

Thursday 20th October (1:30-2:30pm) – Parents/carers invited into school – Art focus – letter to follow

Friday 21st October – School Closes

Monday 7th November – School Opens

I also want to provisionally inform you of some plans for later in the school year, as I know many of you will like to plan ahead.

For details on school term dates, please see our website.

Wednesday 8th February (pm) – Parents/carers invited into school – DT focus

Tuesday 14th March (pm) – Parents invited into school – History focus

Friday 12th May (pm) - Visit to Valley Gardens, parents invited – Science focus

Tuesday 27th June - Year 1 end of year Trip to Stockeld Park – PSHE focus